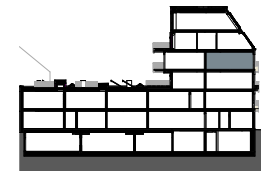
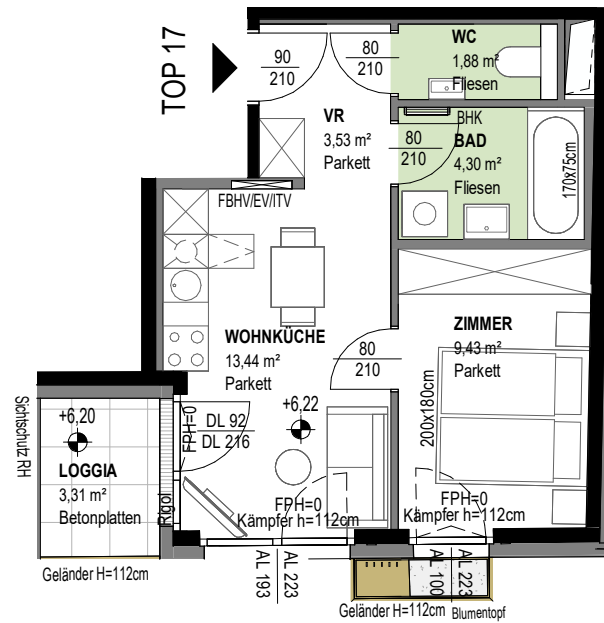
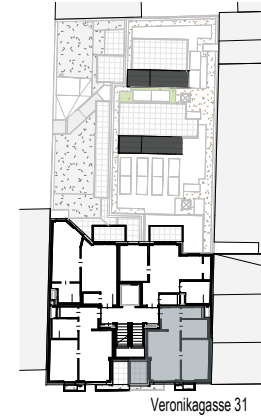


VERONIKAGASSE 31

A-1170 Wien



TOP 17

3.OBERGESCHOSS

2 ZIMMER

Wohnnutzfläche
(inkl. Loggia)

ca. 32,58 m²
ca. 35,89 m²

Loggia
Einlagerungsraum
Raumhöhe

ca. 3,31 m²
ca. 1,62 m²
ca. 252 cm