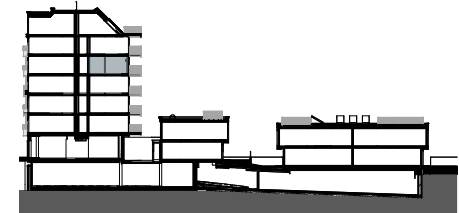
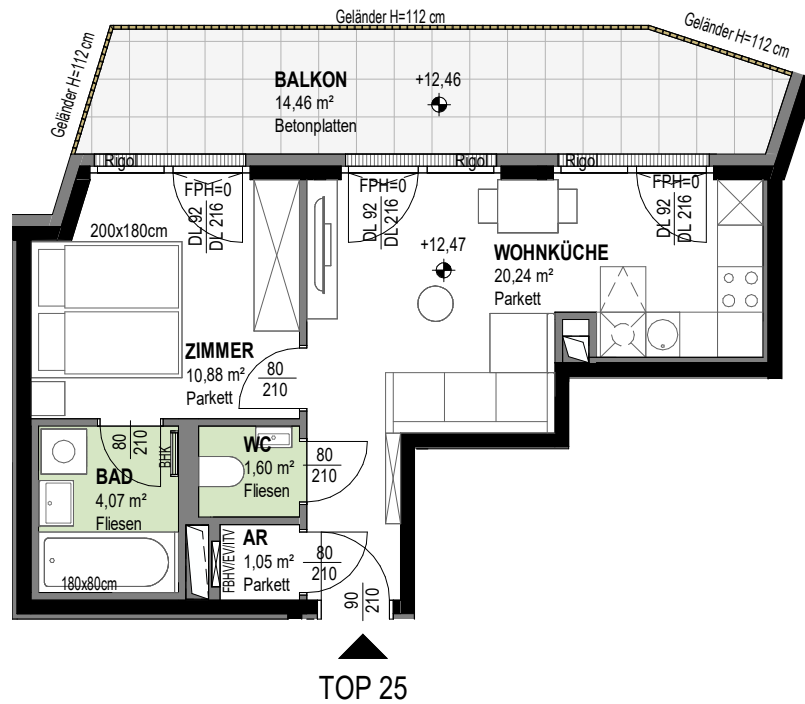
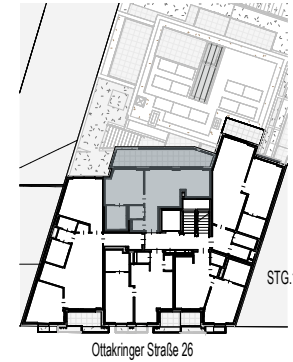


OTTAKRINGER STRASSE 26

A-1170 Wien



TOP 25

4.OBERGESCHOSS

Wohnnutzfläche

Stiege 1

2 ZIMMER

ca. 37,84 m²

Balkon

ca. 14,46 m²

Einlagerungsraum

ca. 4,60 m²

Raumhöhe

ca. 252 cm