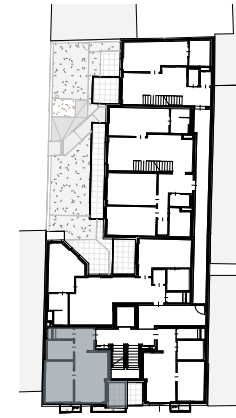
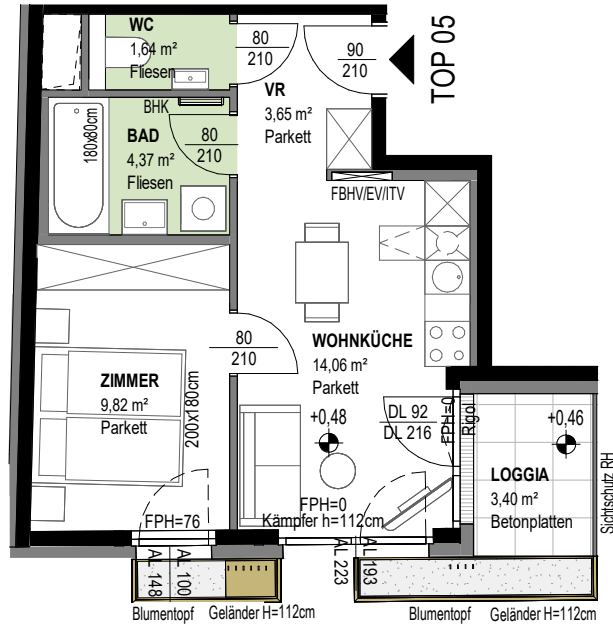
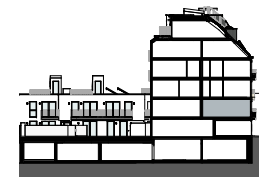


VERONIKAGASSE 31

A-1170 Wien



Veronikagasse 31



TOP 05

1. OBERGESCHOSS

2 ZIMMER

Wohnnutzfläche
(inkl. Loggia)

ca. 33,54 m²
ca. 36,94 m²

Loggia
Einlagerungsraum
Raumhöhe

ca. 3,40 m²
ca. 2,06 m²
ca. 252 cm