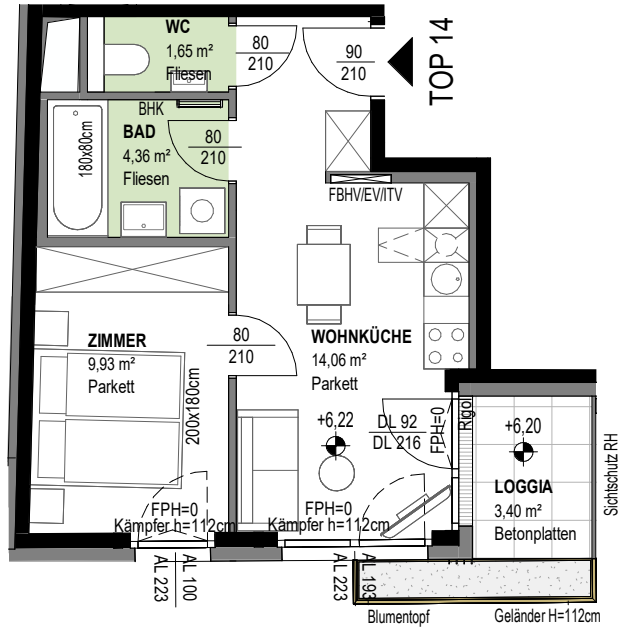
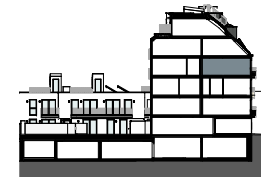
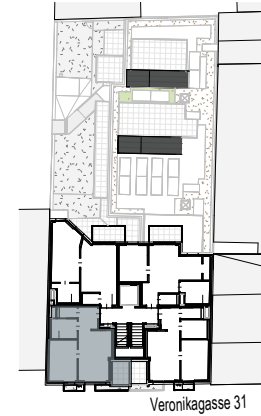


VERONIKAGASSE 31

A-1170 Wien



TOP 14

3.OBERGESCHOSS

2 ZIMMER

Wohnnutzfläche
(inkl. Loggia)

ca. 33,64 m²
ca. 37,04 m²

Loggia
Einlagerungsraum
Raumhöhe

ca. 3,40 m²
ca. 2,30 m²
ca. 252 cm