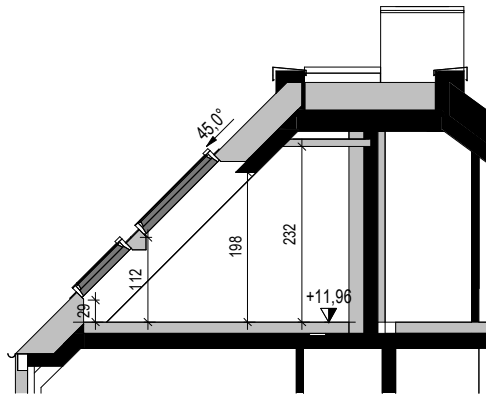
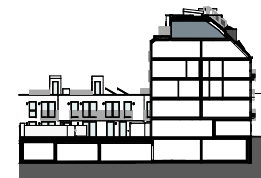
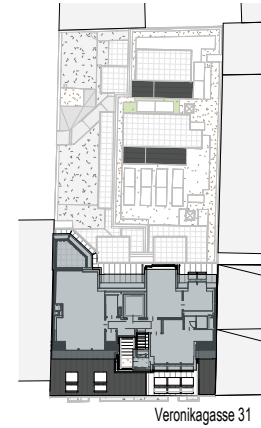
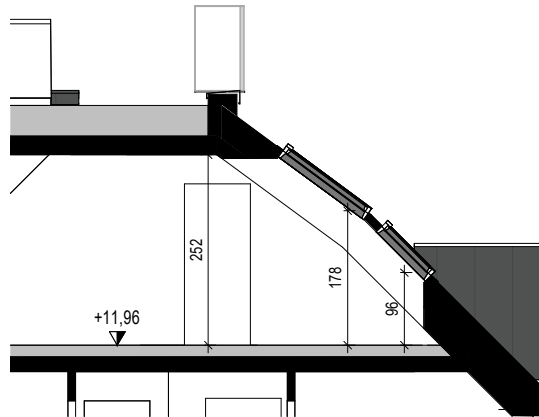


VERONIKAGASSE 31

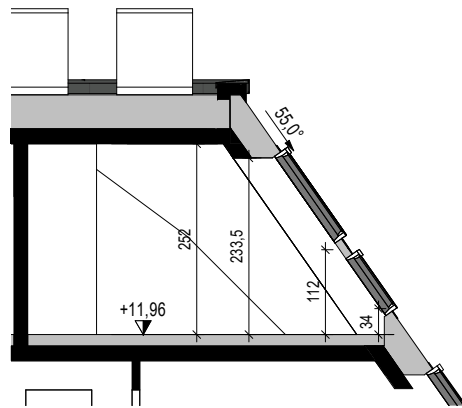
A-1170 Wien



Schnitt 20.A



Schnitt 20.C



Schnitt 20.B

TOP 20

2.DACHGESCHOSS

3 ZIMMER

Wohnnutzfläche

ca. 95,78 m²

Dachterrasse

ca. 5,54 m²

Einlagerungsraum

ca. 1,40 m²

Raumhöhe

ca. 252 cm