



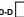

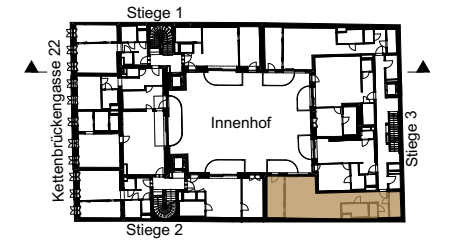
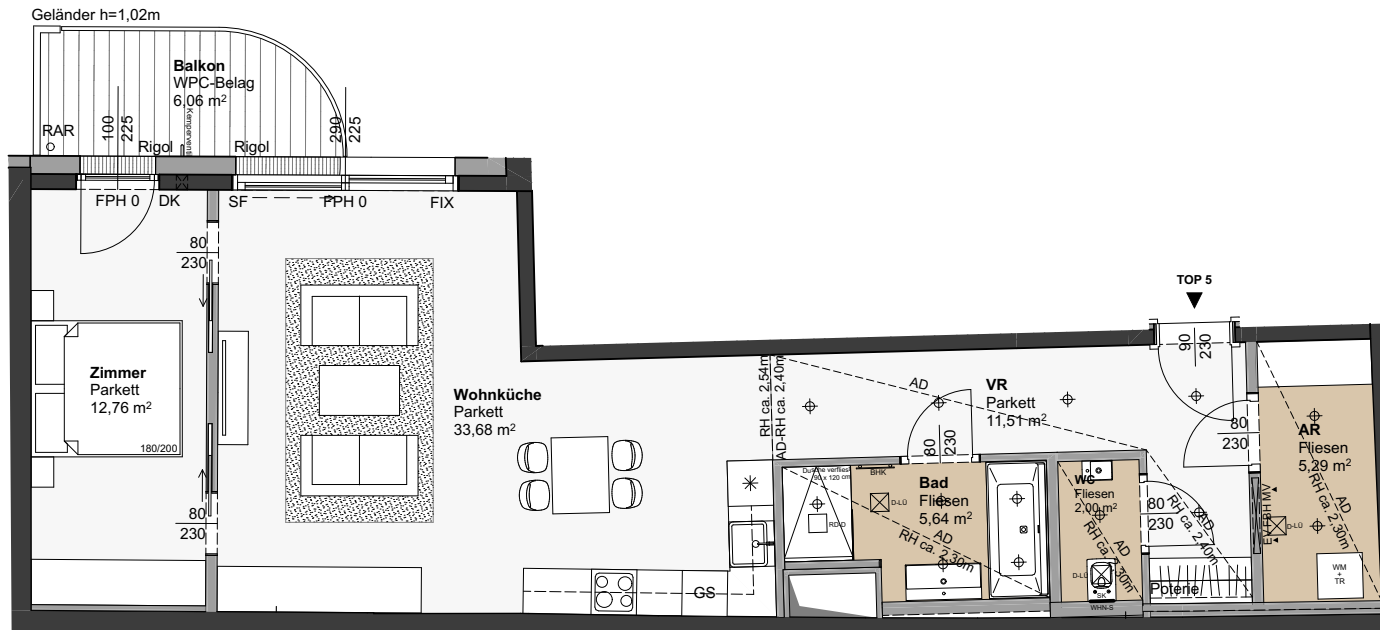


### LEGENDE

#### ALLGEMEIN

-  ...Spülkasten
-  ...Wohnungsstation (Rev./Öff.)
-  ...Deckenlüfter
-  ...Wandlüfter
-  ...Regendusche (Deckenauslass)
-  ...Regendusche (Wandauslass)



OG1



SCHNITT 1-1

### TOP 5 Stiege 3

1. OBERGESCHOSS 2 Zimmer

Wohnnutzfläche ca. 70,88 m<sup>2</sup>

Balkon ca. 6,06 m<sup>2</sup>  
Einlagerungsraum ca. 3,94 m<sup>2</sup>  
Raumhöhe ca. 230-254 cm

