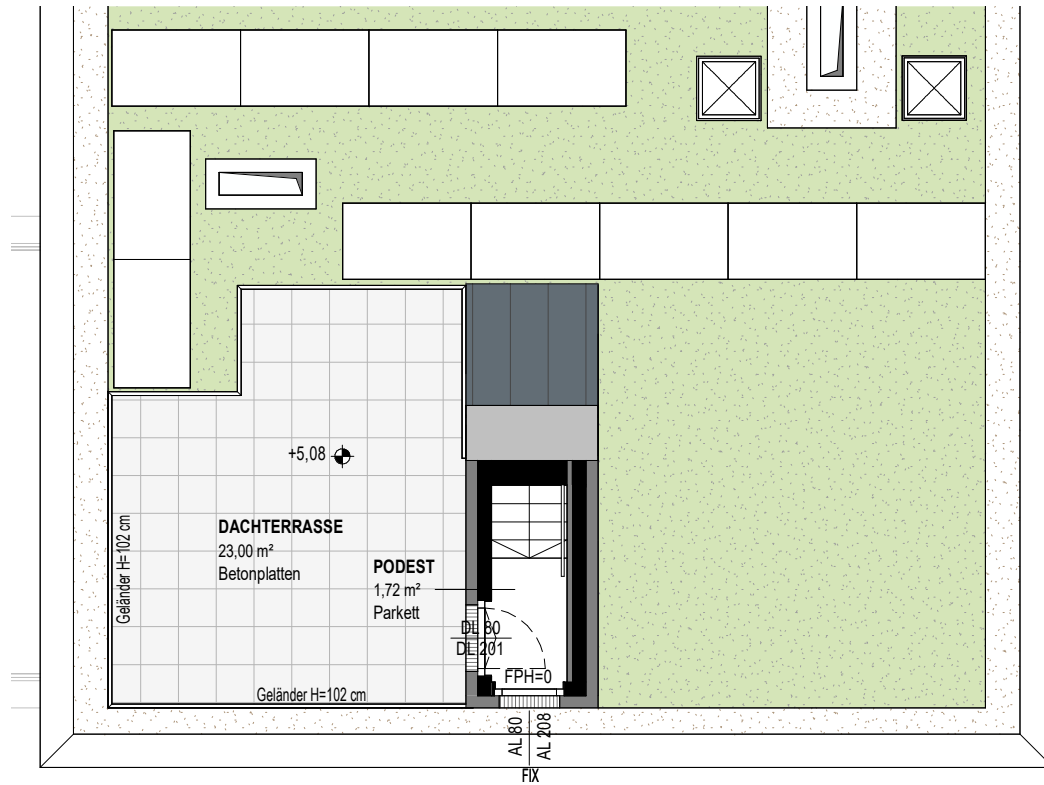
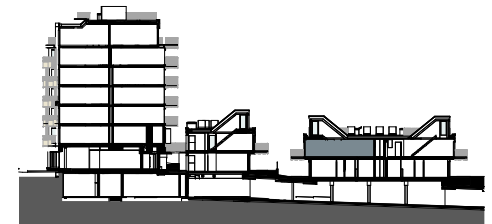
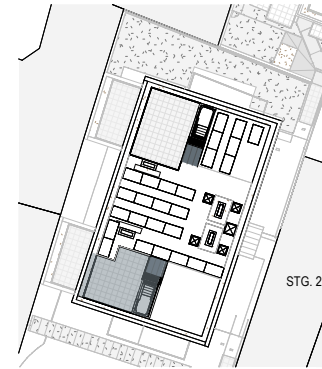


OTTAKRINGER STRASSE 26

A-1170 Wien



TOP 05+06

2. OBERGESCHOSS

Wohnnutzfläche

Balkon

Terrasse

Dachterrasse

Einlagerungsraum

Raumhöhe

Stiege 2

4 ZIMMER

ca. 122,33 m²

ca. 13,17 m²

ca. 13,27 m²

ca. 23 m²

ca. 8,22 m²

ca. 252 cm