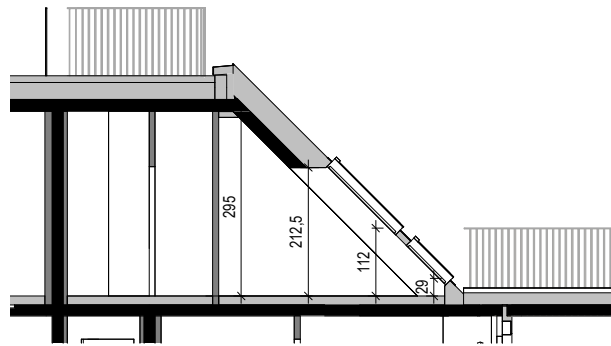
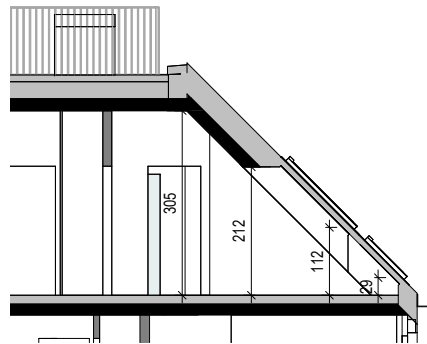


# OTTAKRINGER STRASSE 26

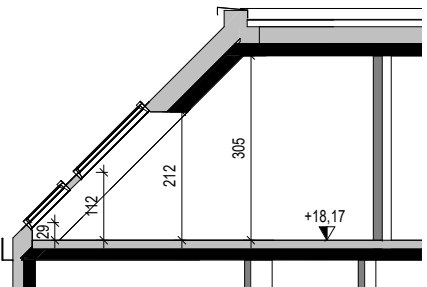
A-1170 Wien



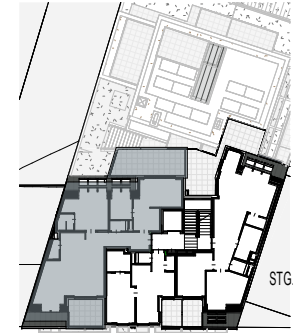
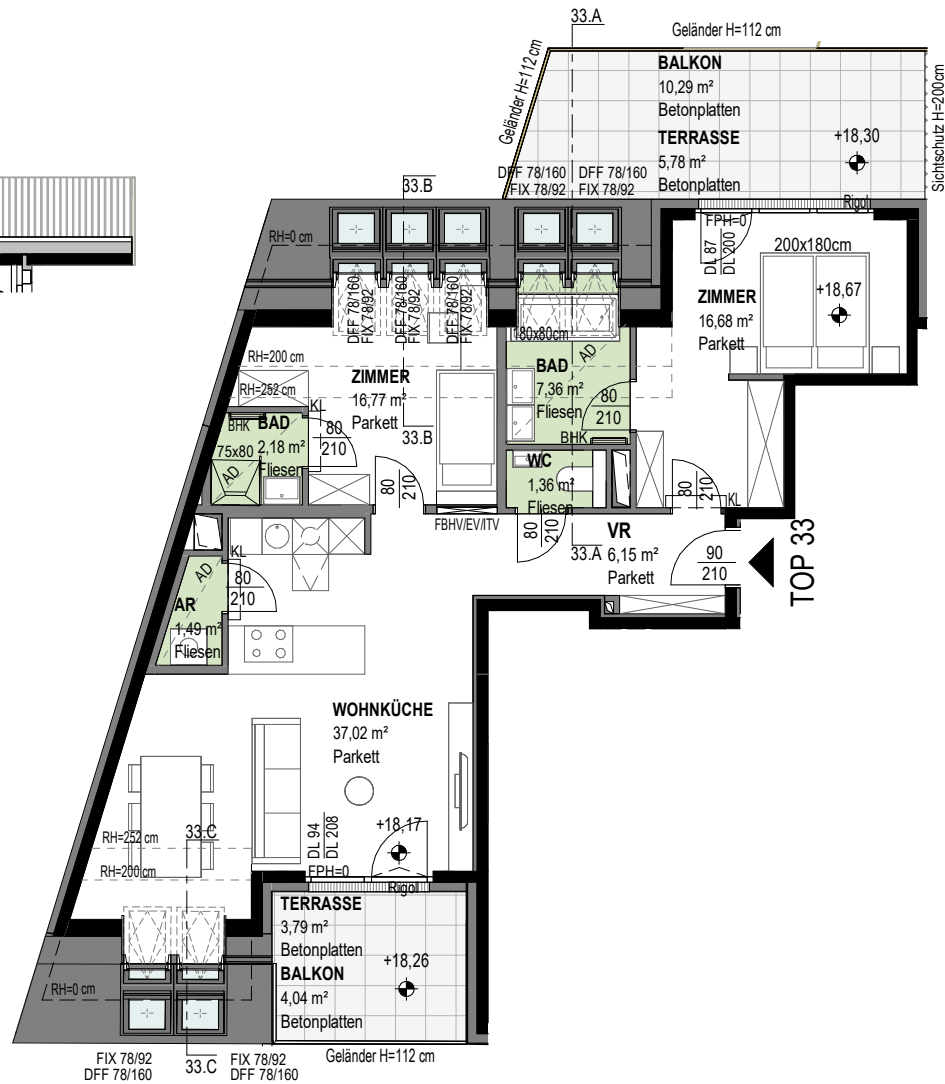
Schnitt 33.A



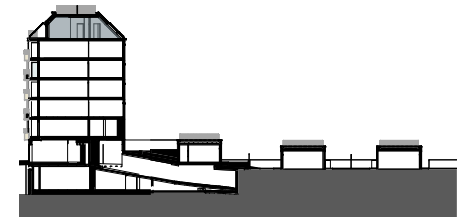
Schnitt 33.B



Schnitt 33.C



Ottakringer Straße 26



## TOP 33

### 2.DACHGESCHOSS

Wohnnutzfläche  
 Balkon  
 Terrasse  
 Dachterrasse  
 Einlagerungsraum  
 Raumhöhe  
 Raumhöhe bei AD

## Stiege 1

### 4 ZIMMER

ca. 89,01 m<sup>2</sup>  
 ca. 14,33 m<sup>2</sup>  
 ca. 9,57 m<sup>2</sup>  
 ca. 16,79 m<sup>2</sup>  
 ca. 3,63 m<sup>2</sup>  
 ca. 305 cm  
 ca. 275 cm