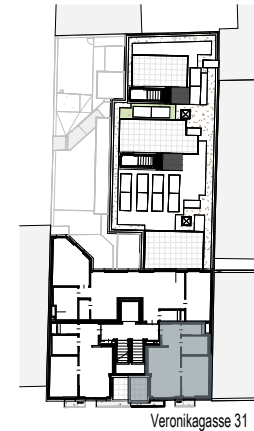
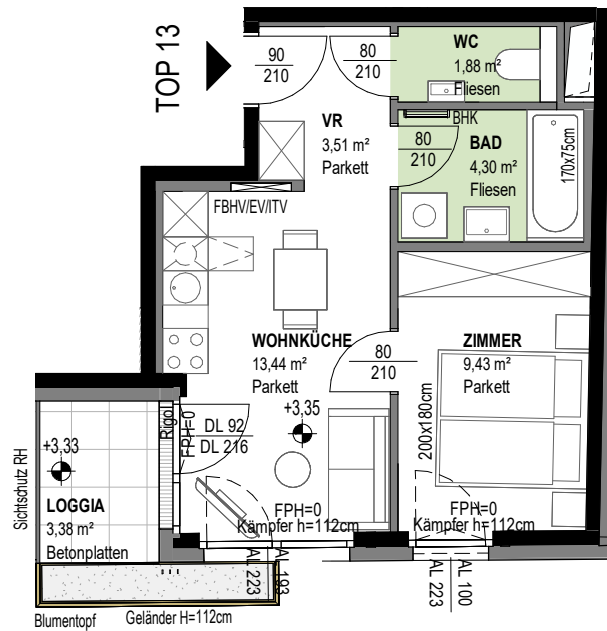
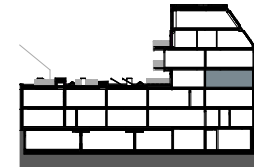


# VERONIKAGASSE 31

A-1170 Wien



Veronikagasse 31



## TOP 13

2.OBERGESCHOSS

2 ZIMMER

Wohnnutzfläche  
(inkl. Loggia)

ca. 32,57 m<sup>2</sup>  
ca. 35,95 m<sup>2</sup>

Loggia  
Einlagerungsraum  
Raumhöhe

ca. 3,38 m<sup>2</sup>  
ca. 2,30 m<sup>2</sup>  
ca. 252 cm