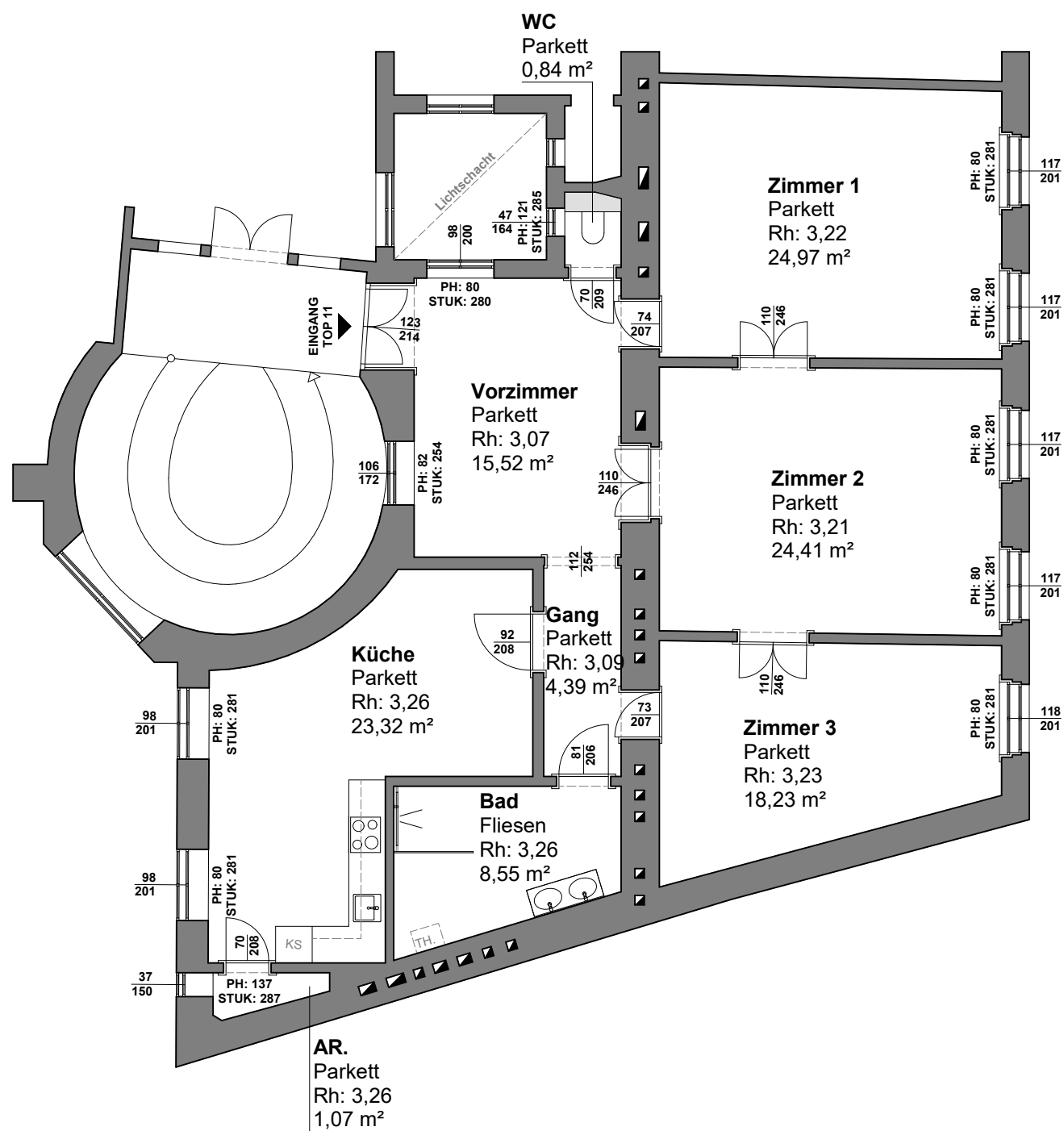


Vorzimmer	15,52 m <sup>2</sup>
WC	0,84 m <sup>2</sup>
Gang	4,39 m <sup>2</sup>
Küche	23,32 m <sup>2</sup>
Bad	8,55 m <sup>2</sup>
AR.	1,07 m <sup>2</sup>
Zimmer 1	24,97 m <sup>2</sup>
Zimmer 2	24,41 m <sup>2</sup>
Zimmer 3	18,23 m <sup>2</sup>
<b>Zusammen</b>	<b>121,30 m<sup>2</sup></b>



Gumpendorfer Straße 25 / Top 11  
1060 Wien

12.09.2022

M= 1:100