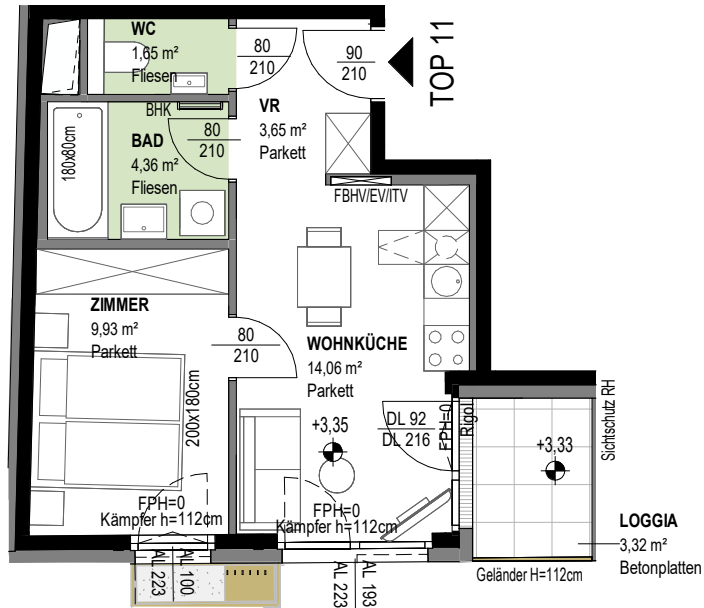
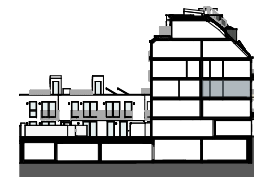
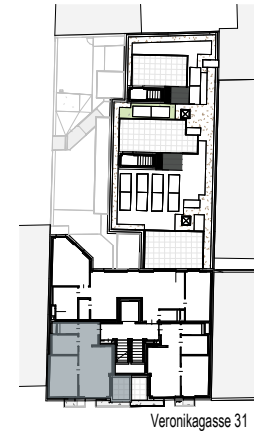


VERONIKAGASSE 31

A-1170 Wien



TOP 11

2.OBERGESCHOSS

2 ZIMMER

Wohnnutzfläche
(inkl. Loggia)

ca. 33,64 m²
ca. 36,97 m²

Loggia
Einlagerungsraum
Raumhöhe

ca. 3,32 m²
ca. 1,96 m²
ca. 252 cm